

# Let's join Jichikai

## What is Jichikai ?

Jichikai is self-governing organizations run by residents who act voluntarily and proactively.

As the closest organizations to the local residents, Jichikai work to solve problems that are difficult for individuals or families to solve on their own, such as disaster prevention, crime prevention, and environmental beautification, in order to create a more livable town.



## What are the benefits of joining?



**People who can help each other in times of disaster.**

By fostering face-to-face relationships, mutual assistance among residents during emergencies such as disasters can save many lives.



**Information becomes easier to access.**

Information disseminated by Jichikai can be obtained through the circulating bulletin board, making it easier to access important information relevant to your local area.



**You can find someone close by whom you can rely.**

By deepening communication through various activities, the entire community becomes a group of collaborators, which also leads to better monitoring of the elderly and children.

## Things that concern Jichikai !



**What are Jichikai fees used for?**

The membership fees collected by many Jichikai are used for Jichikai activities, which form the foundation of community development. Cleaning activities, holding festivals, compensation to officers, repairing community centers, subsidies for senior citizen associations and children's associations.



**Isn't it difficult to be an executive?**

In many Jichikai, the officers are filled by the members on a rotating basis. Jichikai need to review the duties of their officers, and the city will cooperate to ensure the continued existence of these organizations.



A truly livable town is only possible when its residents trust and respect each other. Let's work together to improve the quality of life and leave a livable town for future generations.

# Joining Jichikai can solve your problem !

## ? Where should I throw away my trash ?

Ask your Jichikai officials about which garbage collection point is used and who is responsible for disposing of their waste. Garbage collection points need to be managed by the people who use them, and cleaning and maintenance are often handled by Jichikai.



## ? There is a dark road at night with no lights . What should I do ?

Jichikai leaders can apply to the city for subsidies for installing security lights and security cameras. To create a safe and secure community, please consult with your Jichikai leader first.



## ? Is there any way I could get to know my neighbors better ?

Many Jichikai organize events such as sports competitions, festivals, cleaning activities, and disaster prevention drills. Participating in community events not only helps create lasting family memories, but also deepens relationships within the community and helps you find reliable people to turn to.



## ? What should I talk to about problems I have in my community ?

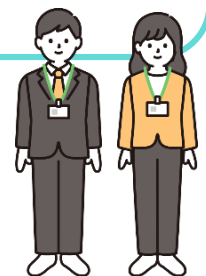
If you have any problems in your community, try consulting with your Jichikai leader.

By consulting with the local government through your Jichikai rather than individually, the issue can be treated as a community-wide problem, allowing the government to respond more quickly and smoothly.



## About the Community Promotion Council

Here are six councils within Yatomi City, each composed of Jichikai for each school district. To ensure that citizens' opinions are reflected in the administration, these councils work in cooperation with the city government, disseminating information on all aspects of administration to citizens and working towards community development through collaboration between the community and the administration.



## Yatomi City Office

〒498-8501

Yatomi-shi maegasu-cho minamihonden 335

☎ : 0567-65-1111